

## Residential Plot for sale in San Pedro de Alcántara, Costa del Sol

710 m<sup>2</sup> Interior | 1,300 m<sup>2</sup> Plot | Pool Yes |



### Property Description

Exclusive, consolidated urban plot in a prime location in San Pedro de Alcántara, adjacent to Guadalmina Alta and Altavista.

With an area of 1,300 m<sup>2</sup>, this property is surrounded by green spaces and offers panoramic views of the sea and mountains.

The location is exceptional, near golf courses like Guadalmina, Atalaya, and La Quinta, just minutes from the beach of San Pedro de Alcántara, as well as supermarkets and local amenities. Only 5 minutes from Puerto Banús and 45 minutes from Málaga Airport.

The plot has an approved building license for a luxury villa, including a basic design project for a villa with 710 m<sup>2</sup> of living space, 439 m<sup>2</sup> of terraces, and underground parking. The project is designed with 6 en-suite bedrooms, providing superior comfort in a natural and private setting.

An excellent investment opportunity in a rapidly growing area.

## Residential Plot for sale in San Pedro de Alcántara, Costa del Sol



SUPERFICIES CONSTRUIDAS



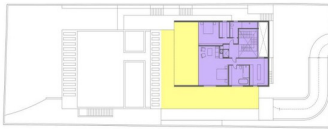
PLANTA JARDIN  
366.00 m<sup>2</sup>



PLANTA PRINCIPAL  
202.40 m<sup>2</sup>

TERRAZA  
258.30 m<sup>2</sup>

PISCINA  
27.40 m<sup>2</sup>



PLANTA ALTA  
142.40 m<sup>2</sup>

TERRAZA  
146.60 m<sup>2</sup>

TOTAL VIVIENDA 710.80 m<sup>2</sup>

TOTAL TERRAZAS 439.30 m<sup>2</sup>

The render images and drawings included in this brochure are for illustrative purposes only and may depict additional features such as landscaping, furniture, and lighting, which are not included in the actual property sale. Potential buyers are advised to refer to the detailed property listing and consult with the real estate agent for an accurate description of the property's features and inclusions.